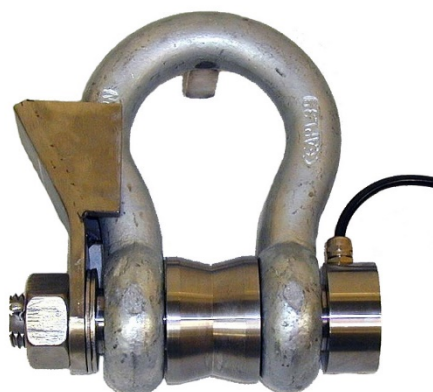


## Features

- Capacities 2tf – 100tf.
- Linearity  $\pm 0.25$ -2% RO.
- IP67 rating.
- Optional dual bridge.

## Applications

- Inline weighing.
- Heavy industry.
- Towing/mooring tension.
- Cable tension monitoring.



## Description

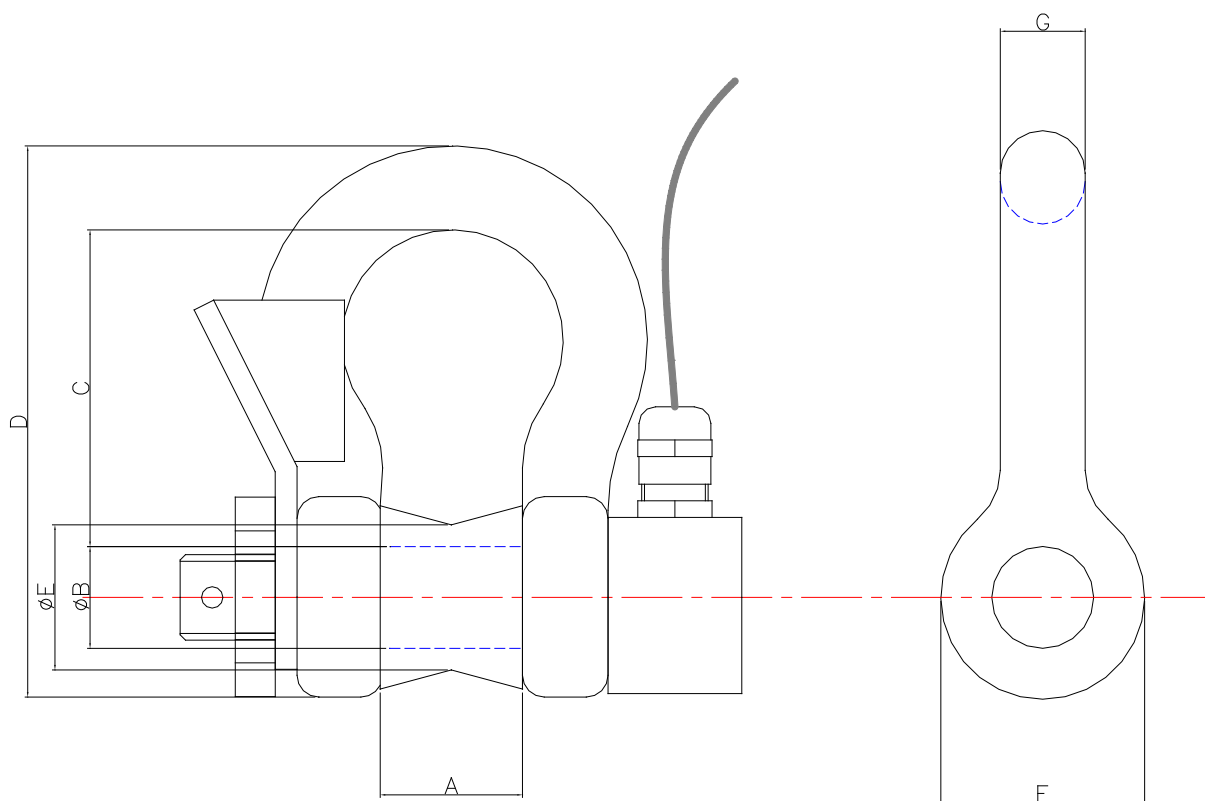
The SLP provides a simple device for tension measurement. The unit is designed around the Crosby G-2130 bolt type anchor shackle. The anti-rotation plate, nut and centralising bobbin are included within the package.

If the shackle sizes listed are not to your requirements PCM can custom build to suit your shackle design.

## Typical Specification

PARAMETER	VALUE	UNITS
Capacities Range	2, 5, 10, 15, 25, 35, 50, 100	tf
Rated Output	1-2	mV/V
Nominal Sensitivity	10	$\pm\%$ of Rated Output
Linearity & Non-Repeatability	0.25-2	$\pm\%$ of Rated Output
Zero Return AFTER 30 MINUTES	0.2	$\pm\%$ of Applied Load
Zero Balance	1.5	$\pm\%$ of Rated Output
Temperature Effect ON ZERO	0.02	$\pm\%$ of Rated Output/ $^{\circ}$ C
Temperature Effect ON OUTPUT	0.1	$\pm\%$ of Rated Output/ $^{\circ}$ C
Temperature Range COMPENSATED	Ambient to +70	$^{\circ}$ C
Temperature Range OPERATING	-10 to +80	$^{\circ}$ C
Input Resistance	380 NOMINAL	$\Omega$
Output Resistance	350 NOMINAL	$\Omega$
Insulation Resistance	>2	G $\Omega$
Excitation RECOMMENDED SUPPLY	10	Volts AC or DC
Excitation MAXIMUM SUPPLY	15	Volts AC or DC
Mechanical Limit SAFE OVERLOAD	200	% of Rated Output
Mechanical Limit ULTIMATE OVERLOAD	500	% of Rated Output
Cable Length	5	m
Cable Type	4-wire, screened	-
Construction Material	Stainless Steel	-
Environmental Protection	IP67	-

**Outline Dimensions** in millimetres



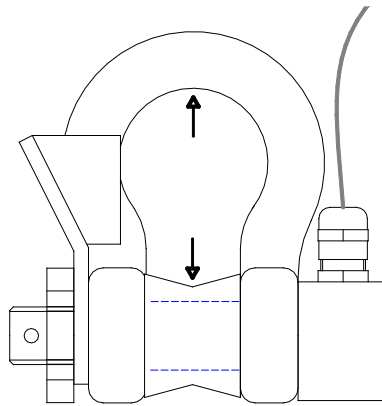
RATING (tf)	G-2130 SHACKLE RATING (tf)	A	ØB	C	D	ØE	F	G	WEIGHT (KG)
2	3.25	26.9	19.1	60.5	106	30.3	38.1	16	0.76
5	6.5	36.6	25.4	84	148	36.6	53	22.4	1.79
10	12	51.5	35.1	119	210	52.6	76	31.8	5.31
25	25	73	51	178	313	72.7	106	44.5	15.4
35	35	82.5	57	197	348	79.4	122	51	23.7
50	55	105	70	267	453	91.9	145	66.5	44.6
75	85	127	82.5	330	546	115	165	76	70
100	120	133	95.5	372	626	127	203	92	120

*If the dimensions or specification do not suit, PCM has an in-house design team that should be able to satisfy your requirements.*

**Wiring Details**

SCHEMATIC DIAGRAM	OUTPUT	CABLE
	EXCITATION +	RED
	OUTPUT +	YELLOW
	EXCITATION -	BLUE
	OUTPUT -	GREEN
	SHIELD	-----

## Loading Mode



## Disclaimer

Modifications reserved. All details describe our products in general form only. PCM assumes no liability whatsoever and disclaims any express or implied warranty relating to sales and/or use of PCM products including liability or warranties relating to fitness for a particular purpose.