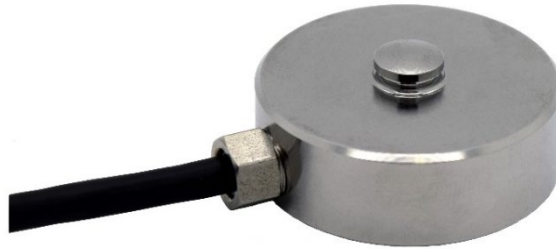


Features

- Capacities 50KG – 2500KG.
- Linearity $\pm 0.2\%$ RO.
- IP67 rating.

Applications

- Test machines.
- Process control.
- Miniature weighing projects.
- Harsh environments.



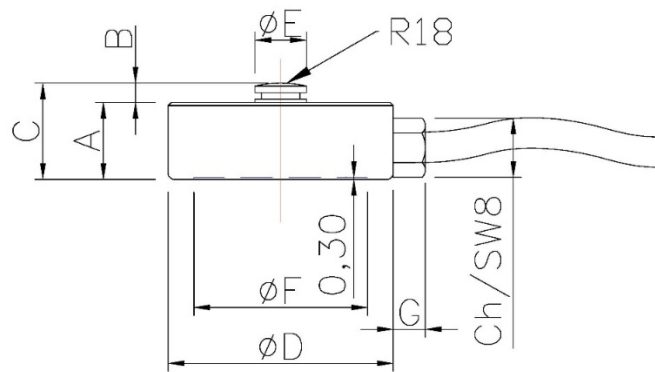
Description

The C-CM is a low-profile compression load cell suitable for the measurement of static and dynamic loads. The CM is produced from stainless steel, completely laser welded and sealed to IP67. This load cell has been designed for test rig applications.

Typical Specification

| PARAMETER | VALUE | UNITS |
|---------------------------------------|-------------------------------|---------------------------------------|
| Capacities Range | 50, 100, 250, 500, 1000, 2500 | KG |
| Rated Output | 2 | mV/V |
| Sensitivity Tolerance | 0.2 | $\pm\%$ of Rated Output |
| Linearity & Hysteresis | 0.2 | $\pm\%$ of Rated Output |
| Repeatability | 0.05 | $\pm\%$ of Rated Output |
| Input Resistance | 400 \pm 20 | Ω |
| Output Resistance | 350 \pm 2 | Ω |
| Insulation Resistance | >5 | G Ω |
| Zero Balance | 1 | $\pm\%$ of Rated Output |
| Temperature Effect ON ZERO | 0.030 | $\pm\%$ of Rated Output/ $^{\circ}$ C |
| Temperature Effect ON OUTPUT | 0.025 | $\pm\%$ of Rated Output/ $^{\circ}$ C |
| Temperature Range STORAGE | -20 to +80 | $^{\circ}$ C |
| Temperature Range OPERATING | -20 to +70 | $^{\circ}$ C |
| Mechanical Limit SAFE OVERLOAD | 150 | % of Rated Output |
| Mechanical Limit ULTIMATE OVERLOAD | >300 | % of Rated Output |
| Mechanical Limit SAFE TRANSVERSE LOAD | 50 | % of Rated Output |
| Mechanical Limit SAFE DYNAMIC LOAD | 50 | % of Rated Output |
| Displacement at Nominal Load | \sim 0.2 | mm |
| Excitation RECOMMENDED SUPPLY | 10 | Volts AC or DC |
| Excitation NOMINAL RANGE | 1-15 | Volts AC or DC |
| Excitation MAXIMUM | 18 | Volts AC or DC |
| Weight | 130 | g |
| Cable | 3 | m |
| Sensor Construction Material | Stainless Steel | - |
| Environmental Protection | IP67 | - |

Outline Dimensions in millimetres



| A | B | C | ØD | ØE | ØF | G |
|----|---|----|----|----|----|----|
| 12 | 3 | 15 | 35 | 8 | 27 | ~6 |

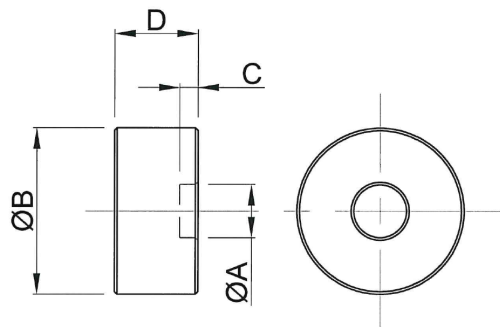
Ordering Codes

| LOAD (KG) | 35mm Ø |
|-----------|----------|
| 50 | CCM50K3 |
| 100 | CCM100K3 |
| 250 | CCM250K3 |
| 500 | CCM500K3 |
| 1000 | CCM1T3 |
| 2500 | CCM2T53 |

If the dimensions or specification do not suit, PCM has an in-house design team that should be able to satisfy your requirements.

Accessories

An optional loading head is available for the CM load cells. Dimensions are given in millimetres.



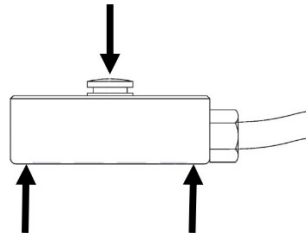
| Ordering Code | ØA | ØB | C | D |
|---------------|-----|----|-----|---|
| CTICCM35 | 8.2 | 25 | 2.5 | 9 |

Wiring Details

| 2mV/V OUTPUT | OUTPUT | CABLE |
|--------------|--------------|--------|
| | EXCITATION + | RED |
| | EXCITATION - | BLACK |
| | OUTPUT + | WHITE |
| | OUTPUT - | YELLOW |
| | ----- | SHIELD |

PVC 70°C shielded cable, 4.2mm Ø with 4 tinned 0.14mm² Ø conductors. Shield connected to the body of the transducer.

Loading Mode



Disclaimer

Modifications reserved. All details describe our products in general form only. PCM assumes no liability whatsoever and disclaims any express or implied warranty relating to sales and/or use of PCM products including liability or warranties relating to fitness for a particular purpose.