

Features

- Capacities 20tf – 100tf.
- Linearity $\pm 0.1\%$ RO.
- IP65 rating.
- Optional cable output (IP67).

Applications

- Lifting applications.
- Process control.
- Hanging scales.

Description

The T-TL-D200 tension link load cell is a simple device for tension measurement. The D200 is produced from stainless steel and has a laser welded assembly. This load cell has been designed for lifting applications.

The D200 tension link is available with a direct cable output rather than connector to provide IP67 sealing. Shackles and fittings to suit are also available on request.

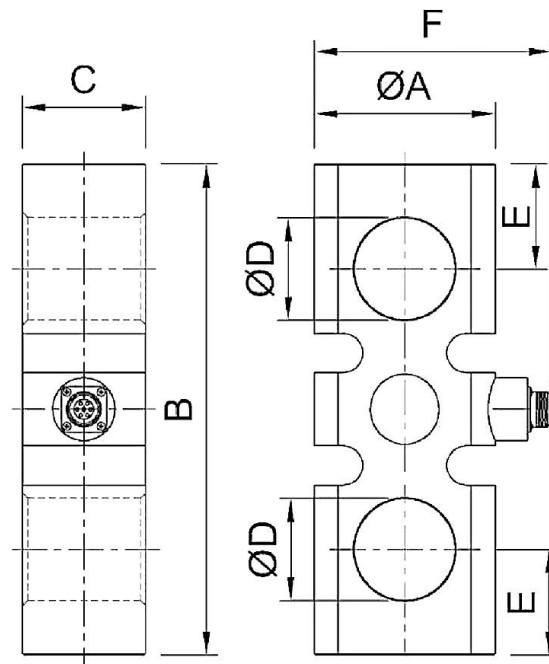


Typical Specification

PARAMETER	VALUE		UNITS
Capacities Range	20, 30	50, 75, 100	tf
Rated Output	2		mV/V
Sensitivity Tolerance	0.1		$\pm\%$ of Rated Output
Linearity & Hysteresis	0.1		$\pm\%$ of Rated Output
Temperature Effect ON ZERO	0.028		$\pm\%$ of Rated Output/ $^{\circ}\text{C}$
Temperature Effect ON OUTPUT	0.008		$\pm\%$ of Rated Output/ $^{\circ}\text{C}$
Input Resistance NOMINAL LOAD	420 \pm 20		Ω
Output Resistance NOMINAL LOAD	350 \pm 2		Ω
Insulation Resistance	>5		G Ω
Zero Balance	≤ 1		$\pm\%$ of Rated Output
Excitation RECOMMENDED SUPPLY	10		Volts AC or DC
Excitation NOMINAL SUPPLY RANGE	1-15		Volts AC or DC
Excitation MAXIMUM SUPPLY	18		Volts AC or DC
Mechanical Limit SERVICE LOAD	120		% of Rated Output
Mechanical Limit SAFE OVERLOAD	150		% of Rated Output
Mechanical Limit ULTIMATE OVERLOAD	200		% of Rated Output
Mechanical Limit SAFE TRANSVERSE LOAD	50		% of Rated Output
Temperature Range OPERATING	-10 to +70		$^{\circ}\text{C}$
Temperature Range STORAGE	-20 to +80		$^{\circ}\text{C}$
Environmental Protection	IP65 ⁽¹⁾		-
Construction Material	Stainless Steel		-
Electrical Connection	MIL-C 5015 7-poles male and mating 5m cable		-

(1) Sealed to IP67 with optional cable output.


Outline Dimensions in millimetres



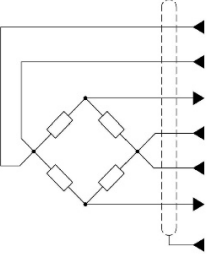
LOAD (tf)	ORDERING CODE	ØA	B	C	ØD	E	F
20	CD20020TC25	102	280	78	60	50	~140
30	CD20030TC25						
50	CD20050TC25	130	350	88	73	75	~171
75	CD20075TC25						
100	CD200100TC25						

Options & Accessories

CAPACITY (tf)	DESCRIPTION ⁽²⁾	ORDERING CODE
20	35tf Rated Shackle	Crosby G2130-1019677
30		
50	55tf Rated Shackle	Crosby G2130-1019695
75	85tf Rated Shackle	Crosby G2140-1021174
100	Custom fittings can be sourced/manufactured on request	

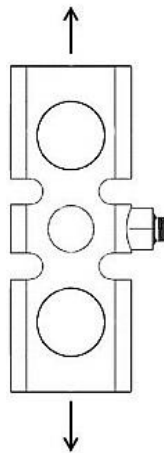
OPTION	ORDERING CODE	DESCRIPTION
	IP67 (Direct Cable Output)	Female 7 poles straight MIL7 connector complete with 5m PVC shielded cable.
-	CD210.. <i>[INSERT LOAD CELL ORDERING CODE]</i> ..C25	Double strain gauge (redundant) bridge.

Wiring Details

-	OUTPUT	MIL7M	MATING CABLE
	EXCITATION+	C	RED
	SENSE+	F	ORANGE
	OUTPUT+	A	WHITE
	EXCITATION-	B	BLACK
	SENSE-	G	BLUE
	OUTPUT-	D	YELLOW
	-----	E	SHIELD

PVC 105°C shielded cable, Ø 5.2mm with 4× Ø 0.35mm² tinned conductors. Shield connected to the body of the transducer.

Loading Mode



Disclaimer

Modifications reserved. All details describe our products in general form only. PCM assumes no liability whatsoever and disclaims any express or implied warranty relating to sales and/or use of PCM products including liability or warranties relating to fitness for a particular purpose.